

*Spartan Xtreme is a world leader in premium finger jointed LOSP treated pine boards. Proven technology and years of effective service in the harsh Australian Climate, Spartan Xtreme is a proven performer and is perfectly suited to meet the demands of the USA exterior wood market.*

## **BORN IN AUSTRALIA, PERFECT FOR THE USA**

Spartan Xtreme has been in the USA for over 10 years and was the first brand to offer a “guaranteed not to rot for 30 years” product to the USA exterior wood market. Spartan Xtreme offers an extensive range of boards and mouldings which come with the Spartan Xtreme 30 year warranty against rot, decay and insect attack. Produced using Radiata Pine one of the worlds truly renewable resources, combined with innovative treatment technologies and our patented priming and top coat system, Spartan Xtreme is the ultimate in exterior above ground wood products.

## **SPARTAN XTREME FEATURES**

- Defect Free Radiata Pine
- Manufactured from Sustainably managed radiata pine
- Exterior Glue System meets ASTM D5572 and D5751
- Guaranteed not to rot for 30 years
- Coated with a proprietary paint system designed to work specifically with LOSP treated material
- New top coat technology protects Spartan Xtreme after installation from the elements for 6 months prior to apply the top coat.
- Low embodied energy compared to alternate products

**THE ULTIMATE SOLUTION IN OUTDOOR WOOD PRODUCTS**

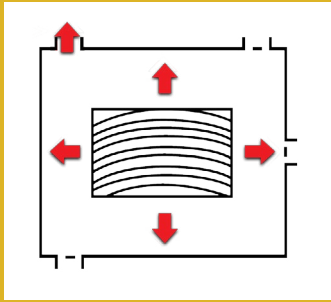
# WHY CHOOSE WOOD?

Wood is the only renewable building materials, and Spartan Xtreme comes from plantation forests. Trees absorb greenhouse gases during growth while releasing oxygen into the atmosphere and storing carbon as wood fibre. Wood also uses little energy to produce as compared with other building materials.

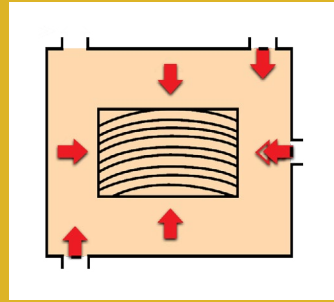
	WOOD	STEEL	CONCRETE	ALUMINIUM
Fossil fuel used in production (MJ/m <sup>3</sup> )	750	266,00	4,800	1,100,000
Carbon released (kg/m <sup>3</sup> )	15	5,320	120	22,000
Carbon stored (kg/m <sup>3</sup> )	250	0	0	0



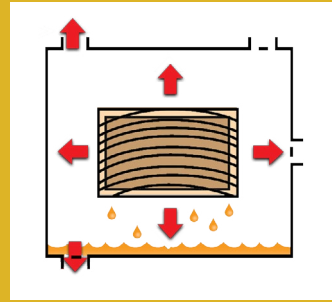
Spartan Xtreme has been treated with Protim Optimum from Koppers that protects the product from decay and termite attack. Protim Optimum is a dry treatment process that does not require re-dry after treatment. It imparts dimensional stability and water repellence as additional features. Koppers treatment is EPA approved.



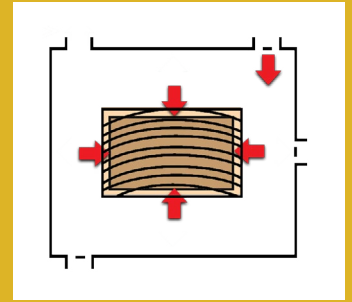
Vacuum applied and air removed from wood cells.



Under vacuum the treatment vessel is flooded with Protim Optimum which enters the wood cells. The vacuum is then released back to atmospheric pressure.



A second vacuum is applies where the Protim Optimum is controlled to the correct penetration and retention.

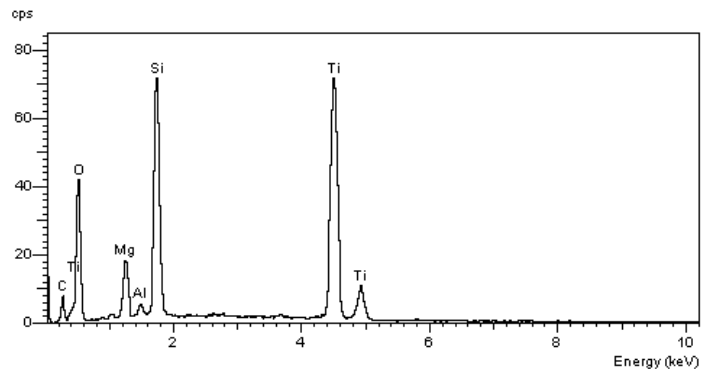


The final stage releases to atmospheric pressure whereby the surface is ready for the paint process.

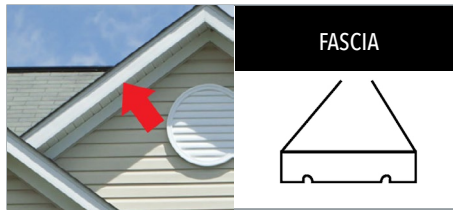
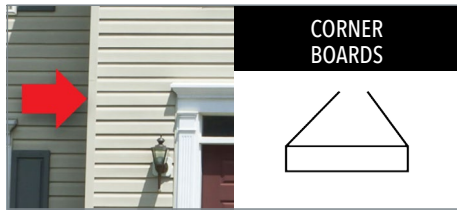
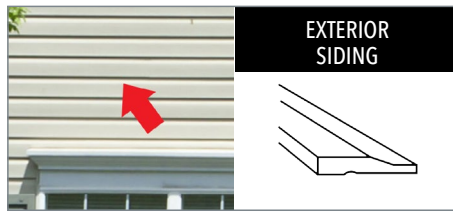
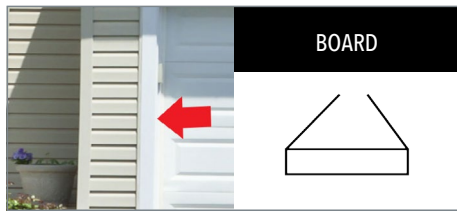
# PRIMER AND TOP COAT TECHNOLOGY

Spartan Xtreme's revolutionary paint protection system has greater flexibility and UV resistance to give a more durable undercoat for the life of the painting system. The technology in the Spartan Xtreme paint protection system was a world first at the time of release as it includes a moisture management system to slow moisture ingress and offers durability second to none as it can remain exposed on a building site for up to 6 months before top coating, thus adding to the dimensional stability and long term performance of the product range. Developed over two years, the Spartan Xtreme paint protection system is specifically designed to coat solvent based wood preservation systems. The result is a genuine protective coating that is ready to directly topcoat with any quality exterior paint.

Unlike competitor products Spartan Xtreme's paint protection system has high levels of Silicate to give the product flexibility and Titanium for its heat reflective properties and durability, stopping the coating from breaking down when exposed to the elements.



# THE SPARTAN XTREME SOLUTION



## HOW IS SPARTAN XTREME PRODUCED?

- After the plantation radiata pine has been kiln dried and knots and other defects have been removed, the wood is finger jointed and edge glued with a ASTM D5572 and D5751 wet use standard glue system. Fully automated gluing systems and temperature control rooms let the glue cure properly.
- Surface quality is achieved with moulders and sanders
- The finished product is then treated in a state of the art treatment facility
- A two coat resene paint system is then applied.
- A comprehensive quality control system throughout the entire process ensures product excellence.

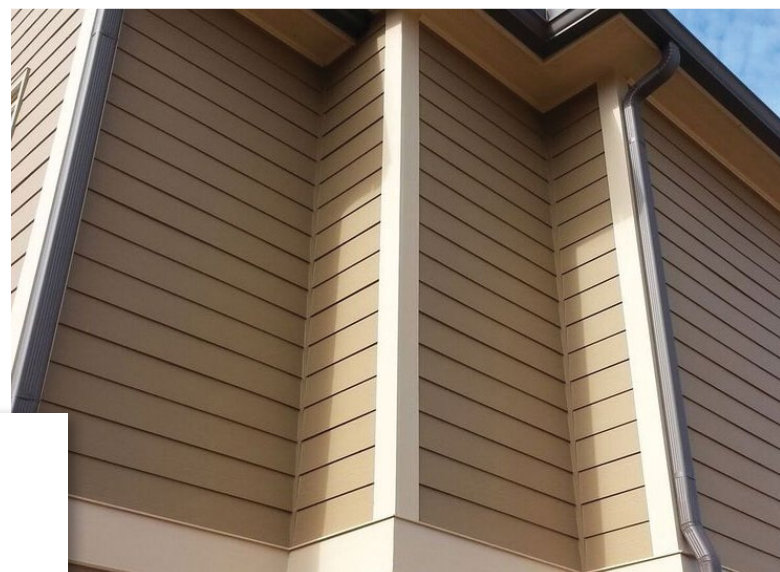
## INSTALLATION TIPS

- Work with your lumber yard to choose the right Spartan Xtreme profile for your application
- Spartan Xtreme should have all cut ends and any notches sealed with an approved treatment sealer.
- All bare wood should be primed before installation
- Appropriate nails should be used.  
We recommend hot dipped galvanised, high tensile aluminium or stainless-steel fasteners
- Putties and mastic sealants should be compatible with oil base paints used with Spartan Xtreme. We also recommend that any gaps between boards or mouldings are filled with a sealant.
- Spartan Xtreme recommends 2 coats of high quality exterior paint to be applied within 6 months of installation. Refer to paint manufacturers guidelines for painting.

## PAINT COLOR

As with all painted wood for exterior use it is a "best practice" to use a light colored top-coat as this helps minimize maintenance requirements. Paint manufacturers can advise the light reflectance value (LRV) of a colour. The higher the LRV value, the less heat the painted substrate will absorb and the longer the expected life of the product and painted surface. The use of dark colors typically increases paint maintenance requirements. Since, as with all similar products, our warranty is contingent on proper coating maintenance we recommend choosing colors with LRV greater than 45%.

*Produced using Radiata Pine, one of the worlds truly renewable resources, Spartan Xtreme is the ultimate in exterior above ground wood products.*

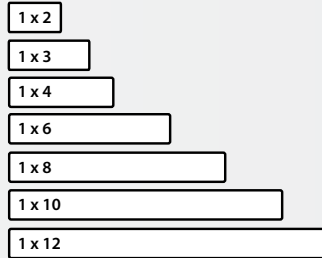


# SPARTAN XTREME PROFILES

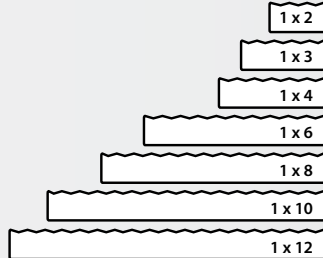


## BOARDS

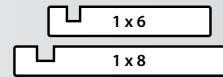
S4S Boards: Smooth four sides



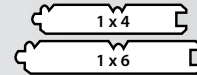
S1S2E Boards: 1 Smooth & 1 Rough face



Plowed Fascia



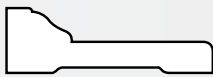
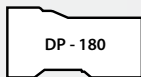
Beaded Soffit



\* All boards available in 1", 5/4" and 2".

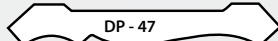
## MILLWORK

Brickmould



1 x 4 Backband Casing

Mouldings



Bed Mould



Drip Cap

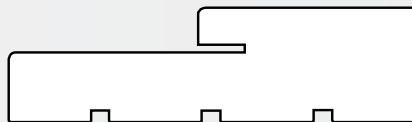


Rake



164 Base Cap

## DOOR FRAMES

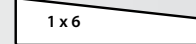


- 4 9/16 Exterior Blank
- 4 9/16 Exterior Blank with weather strip
- 4 9/16 Exterior Blank with weather strip and header
- 4 9/16 Exterior Blank 7'0"    6 9/16 Exterior Blank 7'0"
- 4 9/16 Exterior Blank 8'0"    6 9/16 Exterior Blank 8'0"

## BEVEL SIDING

Available in 3/8"

S1S2E



Board comes standard in 16 & 20 ft (other length available to order with appropriate lead times)  
 Fascia, Soffit, Siding and Millwork available 16ft as standard.  
 Brickmould available in 7,14 and 17ft standard

## WINDOW PARTS

Sill - 16'



Sill Nose- 16'



Blind Stop- 16'

For further technical information & installation guidelines please visit

[www.itiamericas.com](http://www.itiamericas.com)